



The Finest Oceanographic Sensors in a Single Package

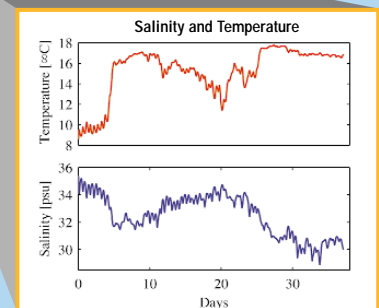
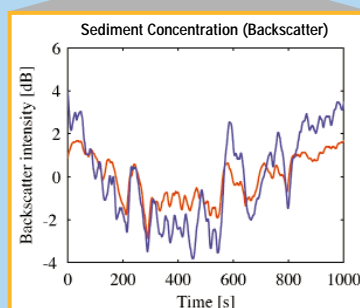
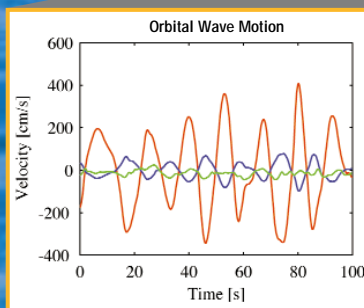
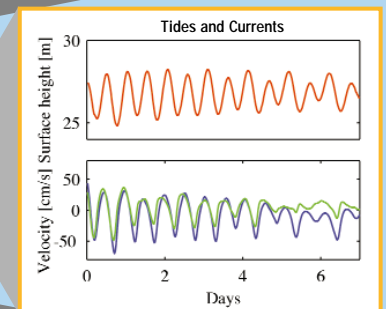
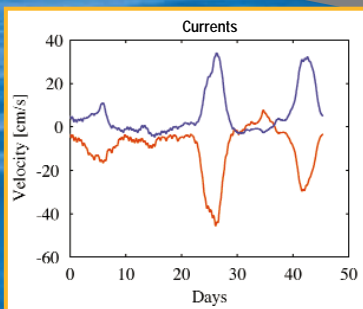
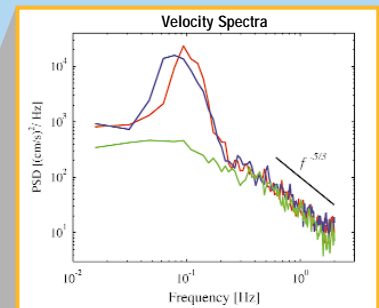
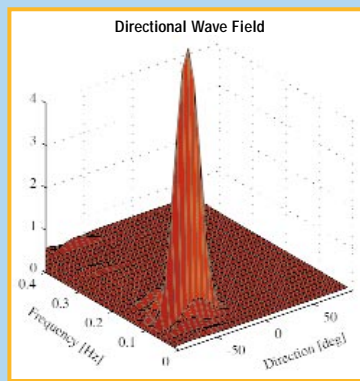
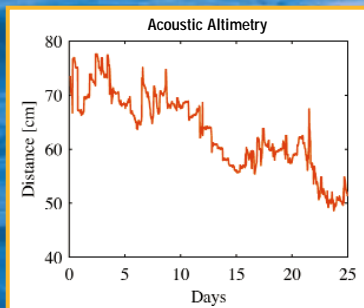
SonTek

HYDRA

The SonTek Hydra combines SonTek's advanced Doppler technology with the best pressure, CT, and turbidity sensors available. The Hydra provides a fully synchronized data stream and multiple independent sampling schemes in a simple, robust package.

THE HYDRA IS IDEAL FOR:

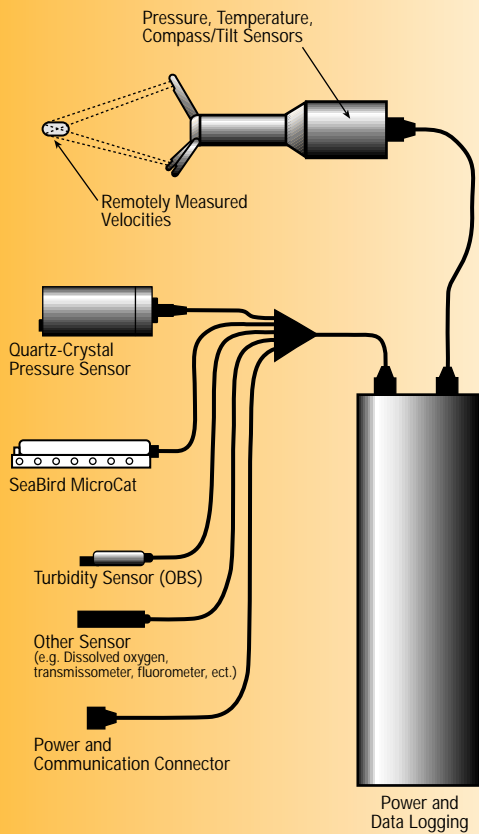
- Wave directional spectra
- Boundary layer dynamics
- Sediment transport
- Surf zone research
- Turbulence
- Long-term tides and currents
- Water quality monitoring



PRODUCT SPECIFICATIONS

SonTek

HYDRA



H Y D R A S P E C I F I C A T I O N S

FEATURES

- Sampling Rates to 25 Hz
- All Sensors Synchronized
- Multiple Independent Sampling Schemes
- Real-Time or Autonomous Operation
- Pressure and Temperature Sensors
- Compass/Tilt Sensor
- Internal Batteries
- Solid State Memory (40-170 Mb)
- Comprehensive Software Package

PERFORMANCE

- Velocity:*
 - 5MHz ADV Ocean Probe
 - Range: 0-500 cm/s
 - Resolution: 0.01 cm/s
 - Accuracy: $\pm 1\%$ of measured velocity, ± 0.25 cm/s
 - Sample Volume: 2.0 cm³
- Temperature:
 - Range: -5.0°C - 45°C
 - Accuracy: 0.1°C
- Compass/Tilt:
 - Heading: $\pm 2.0^\circ$
 - Pitch/Roll: $\pm 1.0^\circ$
- Power Consumption:
 - Operating: <3 W
 - Standby: 0.001 W
 - 12-24 VDC (External or Batteries)
- Communication:
 - Supports RS232, RS422, RS485

Environmental:

- Depth Rating: 250 m - (Call for deeper ratings)
- Temperature:
 - Operating: -5°C - 45°C
 - Storage: -10°C - 60°C

OPTIONS**

- 10 MHz ADV Probe
- Strain Gauge Pressure:
 - Range Choices: 5-300 m FS
 - Accuracy: 0.1% FS
- Resonant pressure transducer
 - Accuracy: 0.01%FS
- SeaBird MicroCat CT Sensor
 - Temperature: 0.002°C
 - Conductivity: 0.0003 S/m
- Turbidity Sensor (OBS)
 - Range: 0.02-2000 FTU
 - Nonlinearity: 2.0%
 - Drift: 3.5% per decade

* Test results available on request

** Provided by sensor manufacturer

For more information, or to receive news about our complete line of water velocity sensors, Please Call (858) 546-8327 or Visit Our Web Site: www.sontek.com



Culkin House, C8 Endeavour Business Park,
Penner Road, Havant, Hants PO9 1QN
T: 02392 488240 F: 02392 488241
W: www.osil.co.uk E: osil@osil.co.uk

CORPORATE HEADQUARTERS

6837 Nancy Ridge Drive, Suite A
San Diego, CA 92121
Tel: (858) 546-8327
Fax: (858) 546-8150
e-mail: sales@sontek.com
website: www.sontek.com

MADE IN U.S.A.

© 1999 SonTek.
SonTek & ADV are registered trademarks of SonTek, Inc., San Diego, CA, USA.
Specifications subject to change without notice.
Hydra. v.3 • 6/99

